

Foreword

There are four methods for installing the USB driver, one for Windows 98 Second Edition, one for Windows Me, one for Windows 2000, and one for Windows XP.

Trademarks

Microsoft and Windows are trademarks or registered trademarks of Microsoft Corporation in the United States and/or other countries.

Exemptions

Yokogawa Electric Corporation does not warrant this product after it has been opened, unless there are physical defects in the original setup disk or this document. YOKOGAWA will not accept responsibility for any damage caused directly or indirectly as a result of using this software.

System Requirements

- **PC**
PC with a Celeron 800 MHz or faster CPU.
- **Disk Drives**
One floppy disk drive. This drive is used to install the software.
- **OS**
Microsoft Windows 98 Second Edition, Windows Me, Windows 2000, or Windows XP.

Installing the Driver in Windows 98 Second Edition

First, use the Windows explorer to copy the YKUSB directory from the floppy disk to the C: drive. Then follow the procedure below to complete the installation.

1. Connecting the DL to the PC with a USB Cable

Turn ON the PC and the instrument. After both devices have completely started up, connect the USB cable. The DL will be automatically detected as a USB device, and the Add New Hardware Wizard will appear as shown below.

Click **Next** to search for drivers for the DL.



2. Selecting the Search Method

Select “Search for the best driver for your device (Recommended),” and click **Next**.

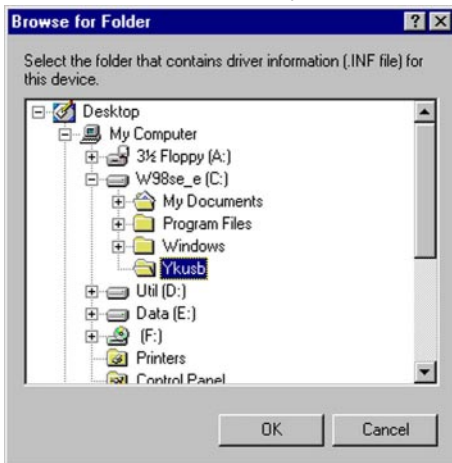


3. Specifying the Location of the Driver

Select the “Specify a location” checkbox, then click **Browse**.



Browse for and select the “ykusb” folder that you copied to the C: drive earlier, then click **OK**.

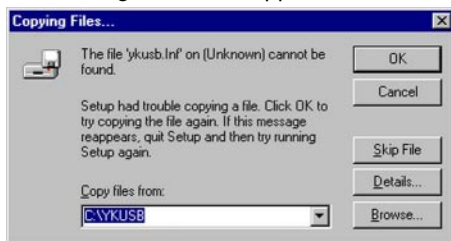


4. Installation

Click **Next**. The installation starts.



If the dialog box below appears, click **OK**.



Finally, the following dialog box is displayed. Click **Finish** to close the Wizard.



Installing the Driver in Windows Me

First, use the Windows explorer to copy the YKUSB directory from the floppy disk to the C: drive. Then follow the procedure below to complete the installation.

1. Connecting the DL to the PC with a USB Cable

Turn ON the PC and the instrument. After both devices have completely started up, connect the USB cable. The DL will be automatically detected as a USB device, and the Add New Hardware Wizard will appear as shown below.



2. Selecting the Search Method

Select "Specify the location of the driver(Advanced)," and click **Next**.

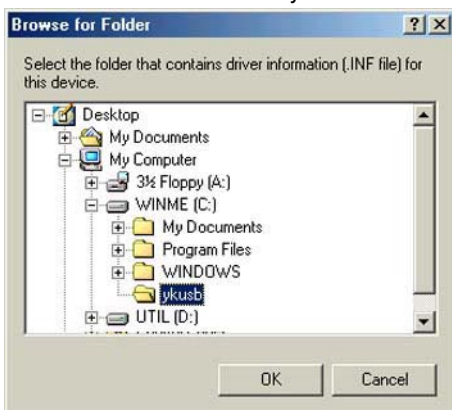


3. Specifying the Location of the Driver

Select the "Specify a location" checkbox, then click **Browse**.



Browse for and select the "ykusb" folder that you copied to the C: drive earlier, then click **OK**.



4. Installation

Click **Next** to have Windows search for drivers.



The search may take 10 to 20 seconds.



When the search is finished, click **Next**. The installation starts.



Finally, the following dialog box is displayed. Click **Finish** to close the Wizard.



Installing the Driver in Windows 2000 Pro

First, use the explorer to copy the YKUSB directory from the floppy disk to the C: drive. Then follow the procedure below to complete the installation.

1. Connecting the DL to the PC with a USB Cable

Turn ON the PC and the instrument. After both devices have completely started up, connect the USB cable. The DL will be automatically detected as a USB device, and the Found New Hardware Wizard will appear as shown below.

Click **Next** to search for drivers for the DL.



2. Selecting the Search Method

Select "Search for a suitable driver for my device (recommended)," and click **Next**.



3. Specifying the Location of the Driver

Select the “Specify a location” checkbox, then click **Next**.

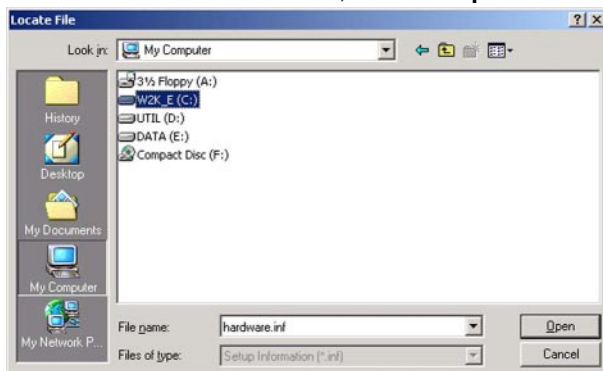


Follow the procedure below to select “ykusb.inf” file in the “ykusb” folder that you copied to the C: drive earlier.

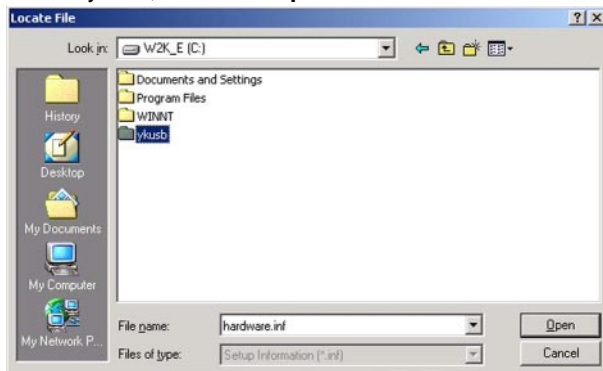
The following dialog box is displayed. Click **Browse**.



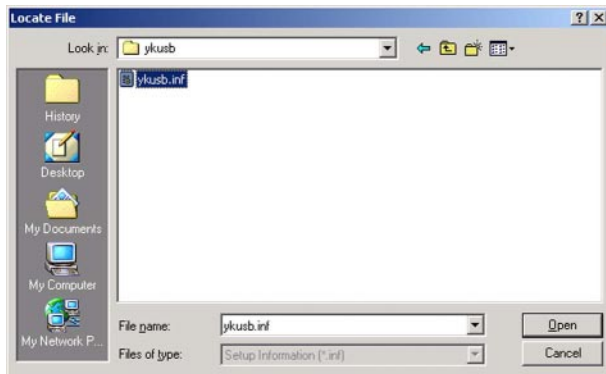
The Locate File dialog box is displayed. Click the My Computer icon on the left side of the dialog box, then select the C: drive in the main window, and click **Open**.



Select “ykusb,” and click **Open**.



Select "ykusb.inf," and click **Open**.

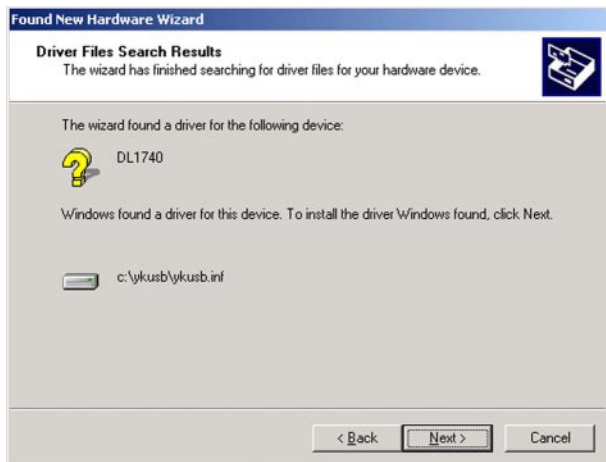


You are returned to the Found New Hardware Wizard. Click **OK**.



4. Installation

Click **Next**. The installation starts.



Finally, the following dialog box is displayed. Click **Finish** to close the Wizard.



Installing the Driver in Windows XP

First, copy the YKUSB directory on the floppy disk directly to the C: drive using Explorer. Then, install the driver according to the following procedure.

1. Connect the DL and the PC using a USB cable.

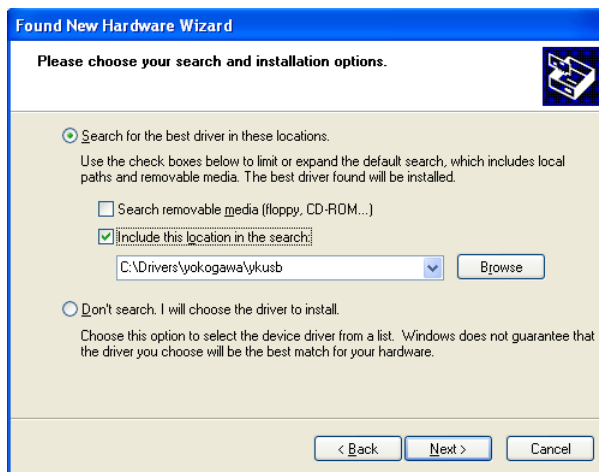
Turn ON the PC and the DL. After the PC and the DL start up normally, connect the USB cable. As shown below, the DL is automatically detected as a USB device.

Select "Install from a list or specific location (Advanced)," and then click **Next**.

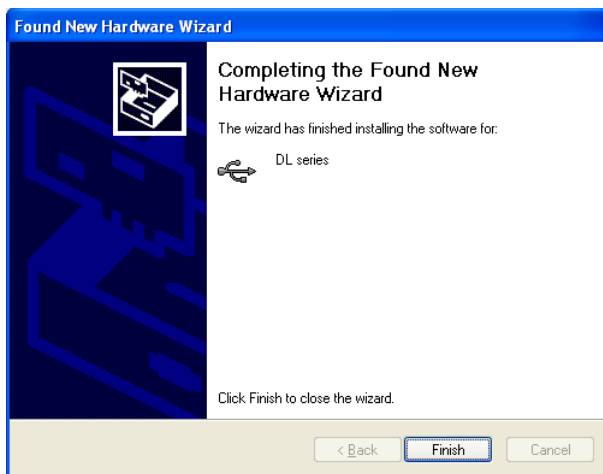
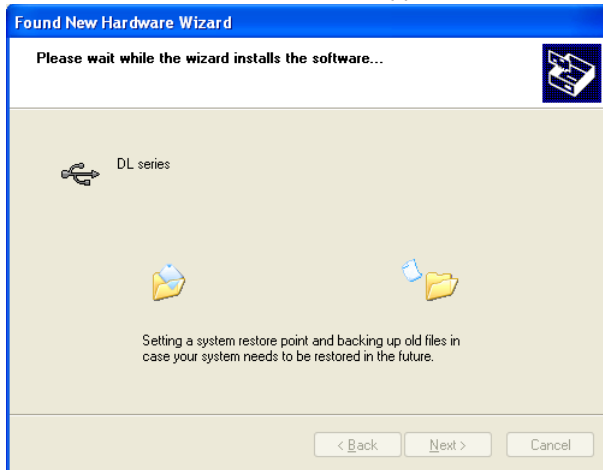


2. Specify the driver location and install it.

- Select the "Include this location in the search" check box.
- Click **Browse** and select the ykusb folder at the root of the drive (C: drive in this case) to which the folder was copied.
- Click **Next**. The installation starts.



If normal, the screen shown below appears, and the driver is installed.



3. Check that the USB driver was installed.

From the Control Panel, choose "System > Hardware > Device Manager," and check that Yokogawa USB Device has been installed.

